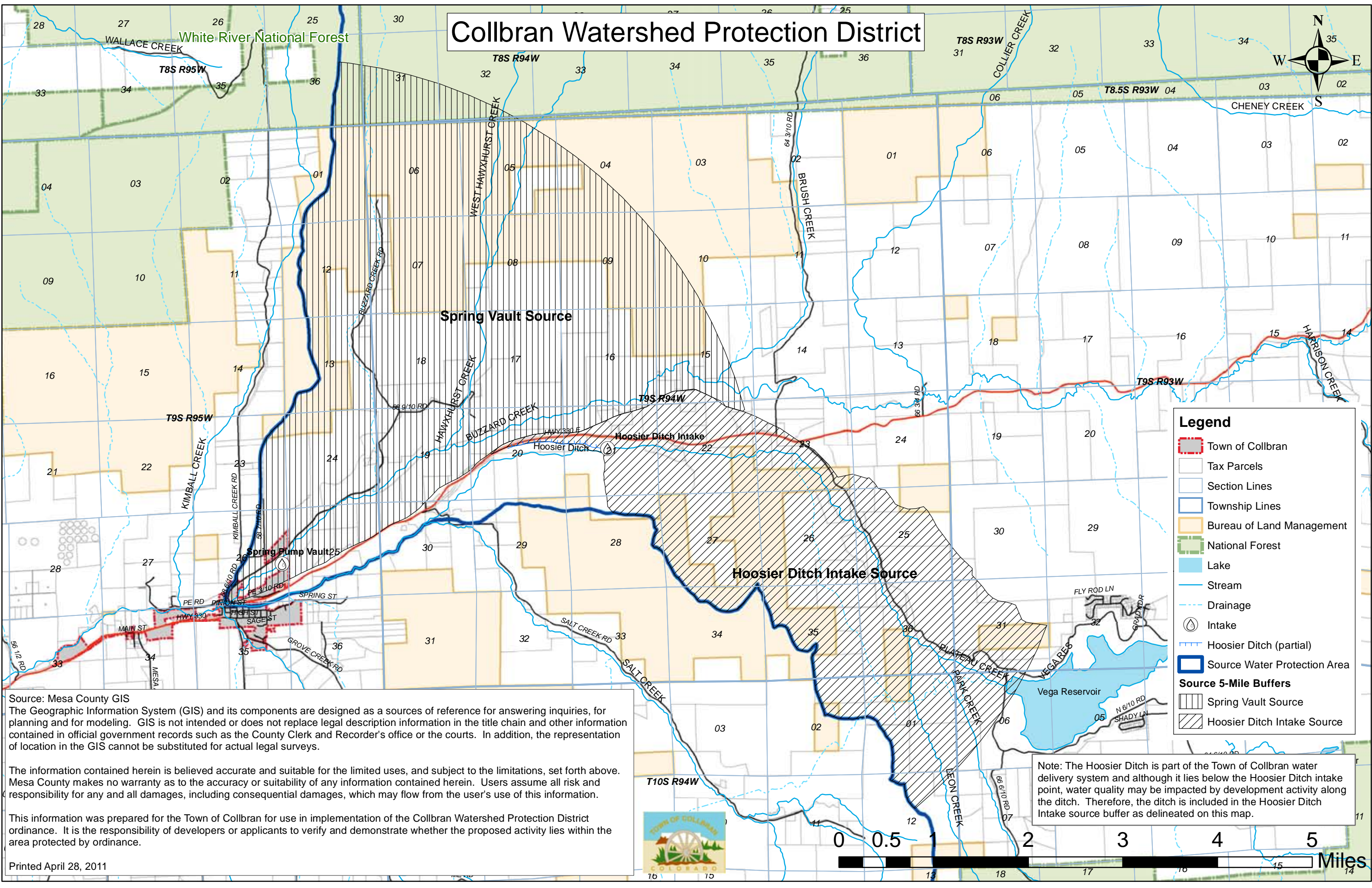


Collbran Watershed Protection District



Legend

- Town of Collbran
- Tax Parcels
- Section Lines
- Township Lines
- Bureau of Land Management
- National Forest
- Lake
- Stream
- Drainage
- Intake
- Hoosier Ditch (partial)
- Source Water Protection Area

Source 5-Mile Buffers

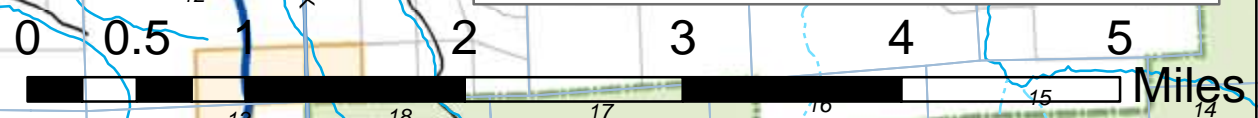
- Spring Vault Source
- Hoosier Ditch Intake Source

Source: Mesa County GIS
 The Geographic Information System (GIS) and its components are designed as a sources of reference for answering inquiries, for planning and for modeling. GIS is not intended or does not replace legal description information in the title chain and other information contained in official government records such as the County Clerk and Recorder's office or the courts. In addition, the representation of location in the GIS cannot be substituted for actual legal surveys.

The information contained herein is believed accurate and suitable for the limited uses, and subject to the limitations, set forth above. Mesa County makes no warranty as to the accuracy or suitability of any information contained herein. Users assume all risk and responsibility for any and all damages, including consequential damages, which may flow from the user's use of this information.

This information was prepared for the Town of Collbran for use in implementation of the Collbran Watershed Protection District ordinance. It is the responsibility of developers or applicants to verify and demonstrate whether the proposed activity lies within the area protected by ordinance.

Printed April 28, 2011



Note: The Hoosier Ditch is part of the Town of Collbran water delivery system and although it lies below the Hoosier Ditch intake point, water quality may be impacted by development activity along the ditch. Therefore, the ditch is included in the Hoosier Ditch Intake source buffer as delineated on this map.